

# LUXURY SERIES

SPLIT-LEVEL 5 BEDROOM

5 BEDROOMS | 3 BATHROOMS | 3,085 TOTAL SF



PRAIRIE HOMES  
— OMAHA —



## FOR MORE INFO CONTACT:

Jackie Taylor

Jackie.Taylor@nexthomesre.com

402.578.7665

## WHY CHOOSE PRAIRIE HOMES?

An Omaha family-operated business, created to provide custom home living for every lifestyle at a reasonable cost. With more than two decades of experience as a custom home builder, we strive to make each dream home a reality.

### Geothermal Heating

Harness the warmth of the earth to heat and cool your home, reducing costs by up to 50%!

### 5+ Energy Star Partner

We guarantee savings on your energy costs because we build the most energy-efficient homes in the metro!

### 1-Year Warranty

Each home comes with a one-year warranty. Take comfort that we've got you covered well beyond the closing date.



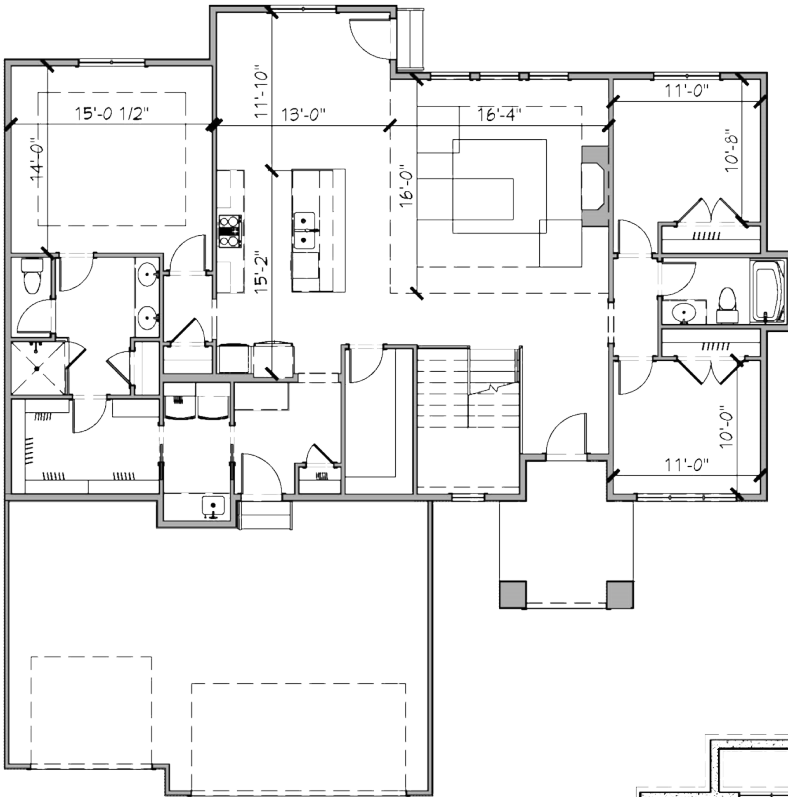
WWW.PRAIRIEHOMESOMAHA.COM

# LUXURY SERIES

-  5 Bedrooms
-  3 Bathrooms
-  3 Car Garage
-  3,085 Total SF

## SPLIT-LEVEL 5 BEDROOM

Enter through the stunning 8-foot door and prepare to be amazed! This flawless split-bedroom floor plan was built with numerous upgrades throughout. Open U-shaped staircase, 11-foot ceilings in the Great room and beautiful detailing are just the start.



### MAIN FLOOR FEATURES

- » Luxury flooring
- » Gorgeous master suite
- » Gourmet kitchen
- » High-end amenities

**MAIN FLOOR: 1,915 SF**

### BASEMENT FEATURES

- » Bar with sink & cabinets
- » Additional bedrooms
- » Bathroom
- » Tons of storage space

**BASEMENT: 1,170 SF**

